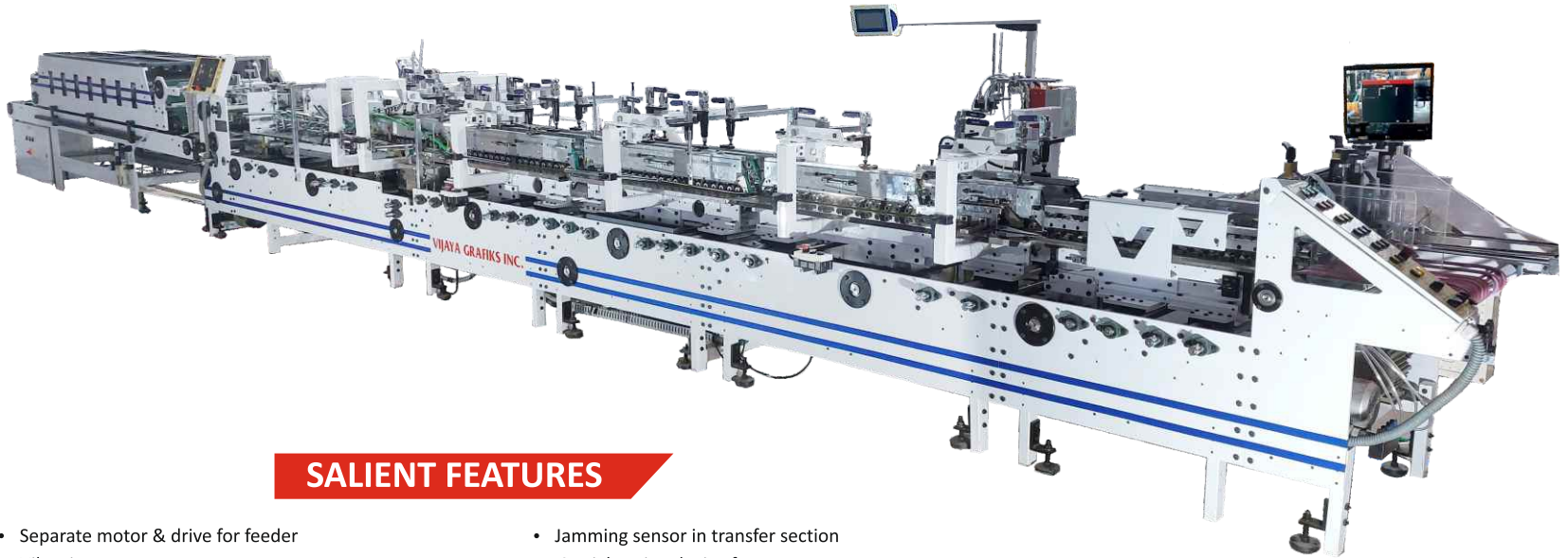


VIJAYA[®] VEENINE⁺

**A PERFECT CARTON FOLDER GLUER FOR
LOCK BOTTOM CARTONS**

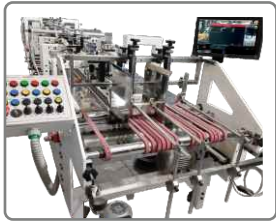


SALIENT FEATURES

- Separate motor & drive for feeder
- Vibrating arm
- Position imaging system
- Suction feeder belt with pump
- Independent Pre-folding unit
- Internationally accepted Advanced technology pre-folding apparatus system
- Pre-folding by folding belt & rod
- Three Transport tracks in two units for lock bottom system
- Glue flap grinder
- A & B pin separate glue tanks
- Speed variator for final folding belts
- Collapsible centre bottom track in final folding
- Batch counter with pneumatic kicker
- Touch screen operated advance technology panel
- Jamming sensor in transfer section
- Straightening device for outer carton
- 4.6 mtr. Pneumatically pressure operated delivery pressing station
- Pneumatically operated carton holding cylinders in pressing station
- Start stop operation pressing station
- Compatible for duplex, triply cartons
- Cache cover folding gluing attachment
- Double wall carton folding gluing attachment
- Pop corn carton attachment
- All timing belts driven
- 12mm solid sheet, CNC machined frame
- Anti vibration mounted pads
- Stand for electronic gluing system
- 3 Nozzle electronic gluing system with touch screen control

OPTIONAL FEATURES

- Plasma curing system
- Quality assurance system
- Braille embossing system
- Clapping device for corrugated cartons



FEEDER

- Electronic vibrating arm, separate motor & VFD with suction feeding belts : The feeding unit with variable speed & suction is designed to allow appropriate space between the cartons even at a very high speed.



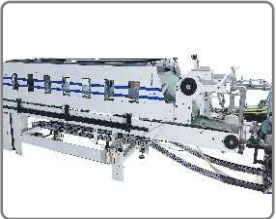
PRE-FOLDING UNIT

- For smooth opening of the carton at the time of filling on automatic filling / packing machine, the first and third crease can be pre-folded at 180° & 135° respectively. The unit is designed with side folding belt (Third crease) to avoid scratches on the cartons.
- Self adjustable transport tracks for duplex & E-fluted cartons



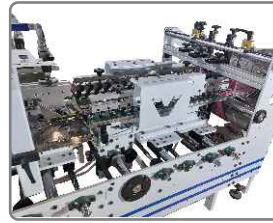
FINAL FOLDING UNIT WITH SPEED VARIATOR

- High speed precision design helps in accurate folding of second and fourth crease after gluing
 - The speed variator device in final folding unit helps in varying the speed of side belts as per the requirement of carton dimension to prevent wastage and miss registration of carton at high speed.
 - The highly performing design of folding belts & runner which plays a vital role in final finishing at a high speed.
- Collapsible centre bottom track which can help to run smallest & the biggest carton without hassles



PRESSURE DELIVERY

- Pneumatic operated pressure system
- 4.5 mtr length with 3.1 mtr of effective pressure.
- Separate motor for pressing station. The independent geared motor helps in increasing or decreasing the speed of unit. So that the different size of cartons comes between the pressure belts smoothly
- Upper conveyor can be moved forward and backward depending on the length of the carton.
- Optional Pneumatically operated carton holding system for outer carton cartons.



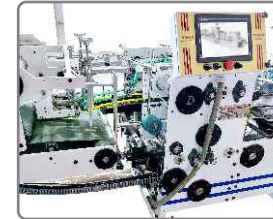
ALIGNER UNIT FOR SIDE REGISTRATION

- Independent unit with an unparallel bottom tracks which guides the box to a parallel handrail to register either side according to requirement of the box



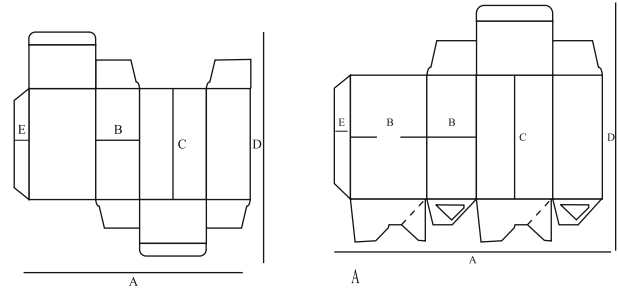
LOCK BOTTOM UNIT

- For folding of all lock bottom flaps this unit is designed in three transport tracks in 2 units, so that the carton remains under pressure of all three tracks at the time of folding of flaps for lock bottom & four/six corner boxes.
- This prevents shifting or non alignment of cartons resulting to low wastage and increases production speed.
- Self adjustable transport tracks for duplex and E-flute cartons.



TRANSFER SECTION

- It allows the carton to be transferred to pressure unit in regular, constant flow at any production speed.
- Straightening device used to correct the registration of outer cartons.
- Equipped with touch control screen for the operating of the machine.
- Batch counter equipped with electronic sensor and pneumatic kicker
- Optional clapping device used for corrugated cartons.
- Optional : Ejection for quality assurance system



Technical Specification of Machine				Technical Specification for STRAIGHT LINE CARTONS							Technical Specification for LOCK BOTTOM CARTONS							
Models	Power Required	Dimension	Max. Speed	Models	A min.	A max.	B Min.	B Max.	C min	D Max.	E min	Models	A min.	A max.	B Min.	C Min.	D Max.	E min
VEENINE 65	12.5KW	1.3mtr X 12.5mtr	300 mtr/m	VEENINE 65	60mm	650mm	15mm	250mm	55mm	450mm	11mm	VEENINE 65	140mm	650mm	32mm	90mm	450mm	11mm
VEENINE 80	15KW	1.5mtr X 13mtr	300 mtr/m	VEENINE 80	110mm	800mm	25mm	300mm	80mm	550mm	12mm	VEENINE 80	140mm	800mm	32mm	130mm	550mm	12mm
VEENINE 102	15KW	1.7mtr X 14mtr	300 mtr/m	VEENINE 102	140mm	1020mm	50mm	400mm	120mm	700 mm	12mm	VEENINE 102	160mm	1020mm	50mm	150mm	700mm	12mm

Note : Due to constant developments/upgradation, any information in this brochure is subject to change without notice